



THE LEAFLET

May 2009



A NEWSLETTER FOR, ABOUT AND BY ROBERTSON COUNTY GARDENERS

UPCOMING GARDEN EVENTS

May 28— MG Club Meeting @ County Ag. Ext. Office (7pm) June 6— Portland Garden Tour 10am- 3pm

July 9— Summer Celebration @ Jackson, TN (10am-6pm)

Thursday 7:30pm or Sunday 9:30am on NPT Channel 8: "Volunteer Gardener"

Saturday 5-5:30am on WTVF Channel 5: "P. Allen Smith Gardens"

Saturday 7-8am 1430 on WPLN-AM: "You Bet Your Garden"



SPRINGFIELD GARDEN TOUR IS GREAT SUCCESS!

By Ursula Otto

May 2, 2009 was a great day for Springfield because it had its first Garden Walk organized by the Master Gardeners of Robertson County. Visitors enjoyed themselves strolling through the gardens, and their request was to have this event again next year. The foundation has been laid, and it is my hope that the Garden Walk will become a tradition in Springfield as it is in many Southern towns with historic districts.



Ursula presenting award for Most Beautiful Garden of Tour to Jim Johnson, Geoff Butcher

PLANT SALE FUNDRAISER

By Julee Orr & Jane Wilkerson,
Co-Chairs Plant Sale

We would like to thank all members who helped by volunteering their time and expertise and who donated items to our organization's second plant sale associated with the Chairs on the Square Festival. The fundraiser was very successful despite the inclement weather. In fact we had return customers from last year's sale.

There was quite a variety of items offered for sale this year that included annuals, perennials, vegetable seedlings, shrubs, trees, herbs, houseplants, bulbs, seeds, container creations for both house and garden,

fertilizer, reading material, a lovely rose bouquet, painted rocks and bamboo stakes.

MASTER GARDENER MEETING

Thursday, May 28, 7pm @ Ag. Ext. Office

Program: Appalachian Wild Flowers

PORTLAND'S IN BLOOM

The Sumner County Master Gardeners are sponsoring a tour of seven gardens in the Portland Tennessee area on June 6th from 10am to 3pm. Refreshments will be served at three of the gardens and a variety of plants and garden paraphernalia will be for sale at one of the gardens. Call the Sumner County extension office at 615-452-1423 or log onto <http://sumner.tennessee.edu> for tour details.

FANCY AN
ESPALIER?

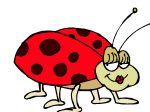
GOT
HONEYSUCKLE?



An "espalier" (pronounced "es-PAL-yer") is any plant trained to grow in a flat plane against a wall, fence or trellis. In training for about eight years, this specimen visually divides a lawn of manicured grasses, trees and flowers from the surrounding field: a fragrant, hardy, readily available use of a native plant.

WET OBSERVATIONS

Ridgetop COCORAHs (Community Cooperative Rain, Hail and Snow) reported 11.51 inches of rain from May 1st – May 26th.



SPRINGFIELD GARDEN TOUR 2009

GARDEN IMPRESSIONS

►
Garden of Pat & Marlin Grimes
Herma & Visitors

“ I found the Grimes’ garden to be a place for meditation. Between visitors, time spent there was like being in another world. The sound of the fountain added so much to the atmosphere of solitude and peace.” Herma Peavyhouse



◀
Garden of Sue & Charlie Stokes

“Anchored well by neatly trimmed evergreens with annuals and pots added for color, the lawn areas provide the perfect rest for the eyes. Underneath the wisteria covered pergola is a perfect place to entertain or curl up with a good book.” Michelle Adcock



Garden of Sally & David Dean

“Elegant topiaries and bonsai in the front yard, espaliered magnolias on the side segway nicely to stately holly trees trees in the rear. Visitors delight in the coral maples trees, leather leaf mahonia and in unique garden art scattered among the plants.” Lynn Stenglein



Garden of Linda Dickson

“I was fortunate to work in Linda Dickson’s lovely cottage garden. We share the same philosophy when it comes to landscaping, that is, to plant as much variety of plants and flowers as a small garden will hold.” Ursula Otto

►
Garden of Jim Johnson & Geoff Butcher
M.G. Hosts Jan & Deb

“In spite of the inclement weather, visitors to the garden were, without fail, enthusiastic. Young and old couples toured together, and Jim enjoyed showcasing his work. It turned into a little “social event with friends seeing each other for the first time since spring had sprung.” Jan Thompson



THINKING GREEN? BUY LOCAL



Autumn's Nursery

2275 Hwy. 41
Greenbrier, TN. 37073

Autumn's Nursery, named after the owner's granddaughter, opened in March, 2009 and is probably the area's newest nursery. Located directly across Highway 41 from the Greenbrier Post Office in the space formally occupied by the T.A.H. Nursery, the nursery is owned by Bobby Staten and operated by him and his family. Mr. Staten operated "Bobby's Flowers" at the Nashville Farmer's Market for several years and has moved his business closer to his home and plant suppliers. Autumn's Nursery is open Monday-Saturday from 7am to 7pm and on Sundays from 9am until 5pm. Depending on the weather, the nursery will be open for the spring/summer season through August 5th; they will reopen in October to sell mums, pansies, and shrubs.

Autumn's Nursery specializes in annuals and shrubs. They also have vegetable plants, a few perennials and tropical plants. Most of their plants are supplied by local growers: T.A.H. Greenhouses, South Central Growers, Young's Nursery, and Mason Greenhouses. When Leaflet staff visited the location, Mr. Stanten was

especially pleased with his wave petunia baskets and lantana baskets. However, he has new plants arriving each day.

GO GREEN IN THE YARD AND GARDEN

Hints from Franklin KY Garden Club

WASTE NOT WANT NOT

- Recycle plastic and clay pots, metal and bamboo stakes.
- Use pine needles or chip your own wood trimmings for mulch.
- Divide perennials and share with friends and neighbors.

GARDENING SHOULD BE EASY ON BOTH THE EARTH AND THE GARDENER

- Use organic fertilizers.
- Use sweetgum balls under hostas to control slugs.
- Grow native plants to provide foods for caterpillars, butterflies, and birds.
- Use compost to conserve moisture, reduce weeds, and add humus to the soil.
- Use soaker hoses and sprinklers in the early morning or after 6pm.

PLANT TREES

Trees provide landscape beauty and benefit the environment today and far into the future. Planting a tree is efficient in terms of time—plant once and enjoy for a lifetime. Trees such as crabapple, serviceberry and dogwood provide beautiful flowers and food for songbirds. Look at what the average tree can do in one year to improve the air:

- Produce enough oxygen for a family of four.
- Absorb the carbon dioxide output from four cars.

CONTACT LIST

M. G. Club Officers

Ursula Otto, President 382-9560 ursulamotto@netzero.net
Judy Bryant, Vice President jbryant2@utk.edu
Lynn Stenglein, Secretary 859-9659 lcgts@hughes.net
Julee Orr, Treasurer 859-0010 julee@lzsally.com

County Agriculture Office

Paul Hart 384-7936 pehart@utk.edu
The Leaflet

Lynn Stenglein 859-9659 lcgts@hughes.net
Lisa Byrum 974-1393 lisa2245@comcast.net

RCMGA Web Site: rcmga.org