

April Master Gardener Meeting!
Thursday, April 28, 7 P.M.
@ County Extension Office
Our program will be a video on composting.
Please bring a plant to exchange
SEE YOU THERE!

“MAKING A GRAND ENTRANCE”

The phrase “drive-by plantings” used to designate median strips seen at 60 miles an hour. Sometimes they’re brilliant, but all too often these areas are reduced to neglected beds of survivors. The next time you leave your own driveway look down at your own beds.

These oft neglected spaces serve a critical function. They should give a hint of good things to come in the rest of the garden, let people know that a gardener lives here and make your house easy to find, without a high maintenance time sink or dyed-mulch fantasia. The answer is to mix drama and common sense leavened with seasonal surprises.

A well planned and planted driveway, no matter what its length, creates a visual journey that promises a happy result while keeping in mind the needs of the car and driver.

The challenge is that you realize driveways are subject to trespass from bikes, basketballs, delivery truck drivers, new drivers backing up, and more. Often these spaces also need to separate your house from your neighbors and they are close to pavements that can radiate heat in the summer and sometimes have to be cleared of snowfall in the winter.

So first, mentally establish the design style of your garden – formal, contemporary, cottage or just a simple smorgasbord of styles! Do you have the space required to plant? How busy is the traffic

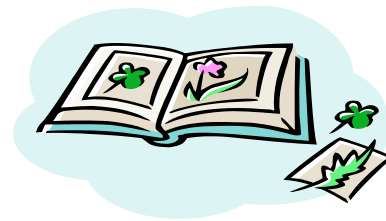
pattern on your street? Does it bake in the summer? What kind of light does it receive? Do you have huge deciduous trees that shade the drive in the summer? Is the area well drained? Knowing these facts helps tremendously in planning and planting your driveway gardens.

Even a narrow strip between the drive and the house can harbor an appealing garden.

Stick with easy-care perennials such as hostas in a shaded area. Try a few different varieties of Evergreens – think height. Interplant some day lilies and low mounding grasses.

As the first thing visitors see, the driveway planting should reflect the general style of the rest of the garden.

Try it out and give your home some CURB APPEAL!



Good book to have on the shelf:

“Gaia’s Garden: A Guide to Home-scale Permaculture” by Toby Hemenway

REMEMBER to bring a small plant to exchange at the April meeting! These will be the door prizes.

GARDEN TOUR TICKETS will be available at the April and May MG meetings. We are pre-selling tickets this year and encourage you to buy for your family and friends!

GARDEN TOUR/PLANT SALE POSTERS and FLYERS will be distributed at our meeting this Thursday, April 25th. If you have a business, church or other location with public access, please post some advertising there.

RCMG T-SHIRTS: We are taking orders for RCMG t-shirts. The cost is \$12 and they are a 50/50 cotton poly mix – light green with the MG logo, these are de rigueur for the garden tour/plant sale, Summer Celebration and other important RCMG occasions and we need at least 10 to place the order! Place your order at the meeting or contact Lynn!

Open House: We are looking for a few volunteers to staff the “Master Gardeners @ Mid-State Mower Open House on April 30th from 10 AM to 2 PM. Good way to get a few hours and meet some new friends!

HAVE YOU SIGNED UP YET?

For the Annual Robertson County Master Gardener Garden Tour and Plant Sale that is!

There are many ways to get involved and contribute:

You can sign up to volunteer to be a guide.

You can donate plants to be sold.

You can help plan

You can put up some signs and spread the word

You can buy tickets for gifts to friends & family

You can pre-sell tickets and tell **EVERYONE!**



Patsy Morris & Ann Crouch at M.G. display Frost Free Weekend at Krogers

Robertson County Master Gardeners greeted dozens of shoppers at Krogers, April 15, 16, & 17th, distributed gardening information and promoted our upcoming Garden Tour/Plant Sale. Several visitors expressed interest in taking the Master Gardener classes next fall. Thanks to Patsy Morris and Douglas Buck for leading this opportunity to educate the public about gardening and our M.G. program, and thanks to Van Tucker for the creating of the display board.

"A GREENER THUMB"

Adding moss to your garden creates a serene, soothing space.

Add a decorative metal or wooden bench for meditation, reading or just relaxing.

Hang a hummingbird feeder close by.

Incorporate small statuary.

Breathe.....

We want to hear from you! Send us your tips, ideas, photographs, questions, suggestions, events, or maybe even an article for The Leaflet! Tell us about yourself!

“EDIBLE GARDENING”

Feel like you simply do not have a space for a garden but would love to have one? Take heart! Anyone with a sunny window sill, a patio, balcony or even a postage stamp sized spot can have a plentiful, beautiful garden.

When space is limited, but enthusiasm is not, think containers. Many companies are now putting out seeds that are specifically for container or small space gardening. Herbs, cucumbers, tomatoes, lettuces all make for pretty plantings in small spaces and you would be very surprised at the yield of a small space! As a matter of fact, this is the way to maximize that small space. Also think vertically.

Just as in conventional gardening, sunshine is vital for small-space success. Six to eight hours of bright light daily is best. Buy bags of soilless mix for container growing. This light weight mixture provides good drainage.

A mini-garden may not produce as a larger garden does but it will still give you some pretty good braggin' rights when you serve that just picked salad!



*“.....the earth smiles in flowers”
Ralph Waldo Emerson*

MARK YOUR CALENDERS!

April 30th – Hermitage Gardens Annual Spring Plant Sale starting at 9 AM

April 29th & 30th – Nashville Natives Plant Sale & Open House each day from 9 AM – 4 PM
Special presentations
615-799-8719

April 30th – Mid State Mowers Open House
10 AM – 2 PM

April 30 & May 1 – Lone Oak Farm (Neelys Bend Road, Madison) “Open House 2011”

April 29th & 30th – Native Plant Festival, GroWild, Fairview

April 30th – Middle Tennessee Daylily Society Spring Sale @ Green Hills Mall

April 30th – Hermitage Plant 9am

May 14th – Portland in Bloom Garden Tour

May 21st – Beaman Park Nature Center Wildflower Hike 9 AM – 12 PM
Call to register 615-862-8580
beamanpark@nashville.gov

May 24th – Robertson County Master Gardener Meeting
(4th Tuesday in May)

CONTACT LIST

*President, Lynn Stenglein, 859-9659, lcsqts@hughes.net
Vice President, Doug Buck, historybug52@yahoo.com
Secretary, Michelle Adcock, shelladcock@yahoo.com
Treasurer, Judy Bryant, jrbryant2@utk.edu*

*Robertson Co. Extension Agent, Paul Hart, 384-7936 ,pehart@utk.edu
RCMGA Web Site: rcmga.org
The Leaflet: Catey Henning, mtnrider55@yahoo.com
Project Coordinator: Julee Orr, julee@mojoridge.com*